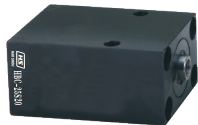


注：操作壓力P：(300<P<500)可訂做



產品簡介

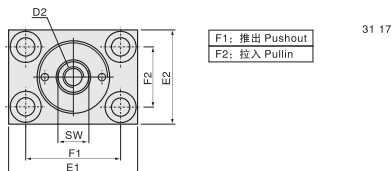
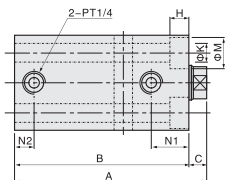
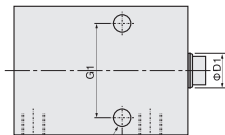
- ◆本系列油壓缸為德規尺寸，採用進口油封保證耐壓，標準化規格，互換性高。
- ◆安裝型式為軸向、側向兩用型，作動方式分為單動吸入型及雙動式。

Introduction of product

- ◆The series of hydraulic cylinder complies with Germany specifications. Employ imported oil seal for outstanding pressure resistance. Standardized specifications and full interchangeability.
- ◆Axial and side mounting type. Choice of single and double acting.

理論出力表 Clamping force

油缸內徑 Bore of cylinder (mm)	活塞杆徑 Piston rod (mm)	受壓面積 Pressure area(cm <sup>2</sup> )		操作壓力 P(Operate pressure kg/cm <sup>2</sup> )			
		F1	F2	100		300	
Φ16	Φ10	2.01	1.22	201	122	603	366
Φ25	Φ16	4.91	2.9	491	290	1473	870
Φ32	Φ20	8.04	4.9	804	490	2412	1470
Φ40	Φ25	12.57	7.66	1257	766	3771	2298



F1: 推出 Pushout  
F2: 拉入 Pullin

31 17

① 系列號 Series	HBC
② 缸缸內徑 Bore of cylinder	Φ16, Φ25, Φ32, Φ40
③ 作動方式 Acting type	S 單動 Single-acting D 雙動 Double-acting
④ 標準行程 Standard stroke	請參考尺寸表 Refer to the dimensional table

訂購標示法 Order Code



外形尺寸表 Dimension table

Bore	Single acting			Double acting			C	D1	D2	SW	E1	E2	F1	F2	G1	G2	H	K	M	N1	N2
	Stroke	A	B	Stroke	A	B															
Φ16	8	62	56	16	62	56	6	10	M6x1.0 12Deep	8	60	35	40	22	30	30	6.5	6.8	11	16.5	11
	20	97	91	50	97	91															
Φ25	8	71	64	20	71	64	7	16	M10x1.5 15Deep	13	65	45	50	30	50	33	9	9	14	18	11
	20	101	94	50	101	94															
Φ32	10	85	75	25	85	75	10	20	M12x1.75 15Deep	17	75	55	55	35	55	38	11	11	18	22	11
	20	110	100	50	110	100															
Φ40	10	89	79	25	89	79	10	25	M16x2.0 25Deep	22	85	63	63	40	63	40	11	11	18	24	11
	20	114	104	50	114	104															

產品簡介

- ◆此型油壓缸，夾持機構為杠杆原理，活塞推出為夾緊狀態，夾持力大於轉角缸，主要機件安裝在缸體外部，易于維護。
- ◆缸體及夾持機構材料均採用機械構造用碳素鋼，堅固耐用，使用壽命長。
- ◆活塞材質採用45鋼，熱處理，表面鍍鉻。
- ◆壓板需增加長度時，請勿大於原長度之1.5倍。



Introduction of product

- ◆The clamp structure of this model is based on the lever principle: it will be tightened as piston pushing out. The clamping force is stronger than the swing clamp cylinder's. The parts are installed outside the cylinder barrel for maintaining easily.
- ◆The cylinder barrel and clamp structure are made of carbon steel. It is firm, durable and long-lived to use.
- ◆The material of the piston is 45 steel, heat treatment, chrome plated.
- ◆Please don't exceed 1.5 times of the original length, if you need to increase the length of the clamping arm.

特性資料 Specification

油缸內徑 Bore of cylinder (mm)	φ25	φ32	φ40	φ50	φ63
活塞杆徑 Bore of piston (mm)	φ18	φ20	φ22.4	φ28	φ35.5
進行程 Clamping stroke (mm)	25	25	30	34	40
受壓面積推出 Pressure area push cm <sup>2</sup>	4.91	8.04	12.57	19.63	31.17
理論夾持力 Theoretical clamping 30kg/cm <sup>2</sup>	116kg	190kg	288kg	453kg	701kg
使用液體 Fluid	已濾清之標準液壓油 Filtered oil				
最大耐壓力 Max operation pressure	70kg/cm <sup>2</sup>				
使用壓力範圍 Range of pressure (kg/cm <sup>2</sup> )	10~50kg/cm <sup>2</sup>				
作動方式 Acting type	復動式 Double acting				

訂購標示法 Ordering Code

